



**HS TIMBER  
GROUP**

**Perfection  
in Timber.**

# Passionate about Timber

## **Who we are: The HS Timber Group**

We are the HS Timber Group, a long-established wood processing company of Austrian origin, with strong roots in Central and Eastern Europe, especially Romania. Wood is our passion. With around 3,200 employees in Austria, Germany and Romania, we produce high-quality wood products for industrial customers all over the world. We are open to new ideas and bold when it comes to realising new opportunities.

## **What we do: we make the best solutions from wood**

We are passionate about meeting new challenges; they fire our imagination and make us go the extra mile to exceed our customers' expectations. We develop tailored solutions for individual customers, from customized glued timber for Japanese housing construction and light wooden panels for American caravans and mobile homes, to blockboards for the furniture industry all over Europe. Our capacity for innovation ensures that we can provide individualised product solutions for our customers across the world.

## **How we do business**

As a company that takes its environmental and social responsibilities seriously, we actively support sustainable forestry and community development. Our employees are best in class and our greatest asset. Together, we strive to continue to grow and expand sustainably. Therefore, we are continually investing in the expansion of our core competences, sawmilling and industrial timber processing, and in the diversification of our business. We are doing this by building a global presence with strong regional roots.



**Of course –  
we can do it!**

Ionuț Ciobanu  
Comănești





# Our vision and mission: Perfection in Timber Getting better every day

## Sustainability

Our resource is renewable and unique.

Our local engagement in the regions initiates and supports economic development and respects the environment.

## Passion

We are passionate about meeting new challenges and finding the best solutions.

Our ability to innovate products and services guarantees individual solutions.

## Partnership

Close cooperation is our key to common success.

Our reliability ensures stability for our employees, customers and suppliers.

### **We are customer oriented.**

The pursuit of perfection and quality makes us different.

### **We respect our regions and value them.**

The regions we work in are the basis for our successful value chain.

### **Our employees are among the best in the industry.**

We support our employees' development and seek their best performance in return.

### **Our organisation is transparent.**

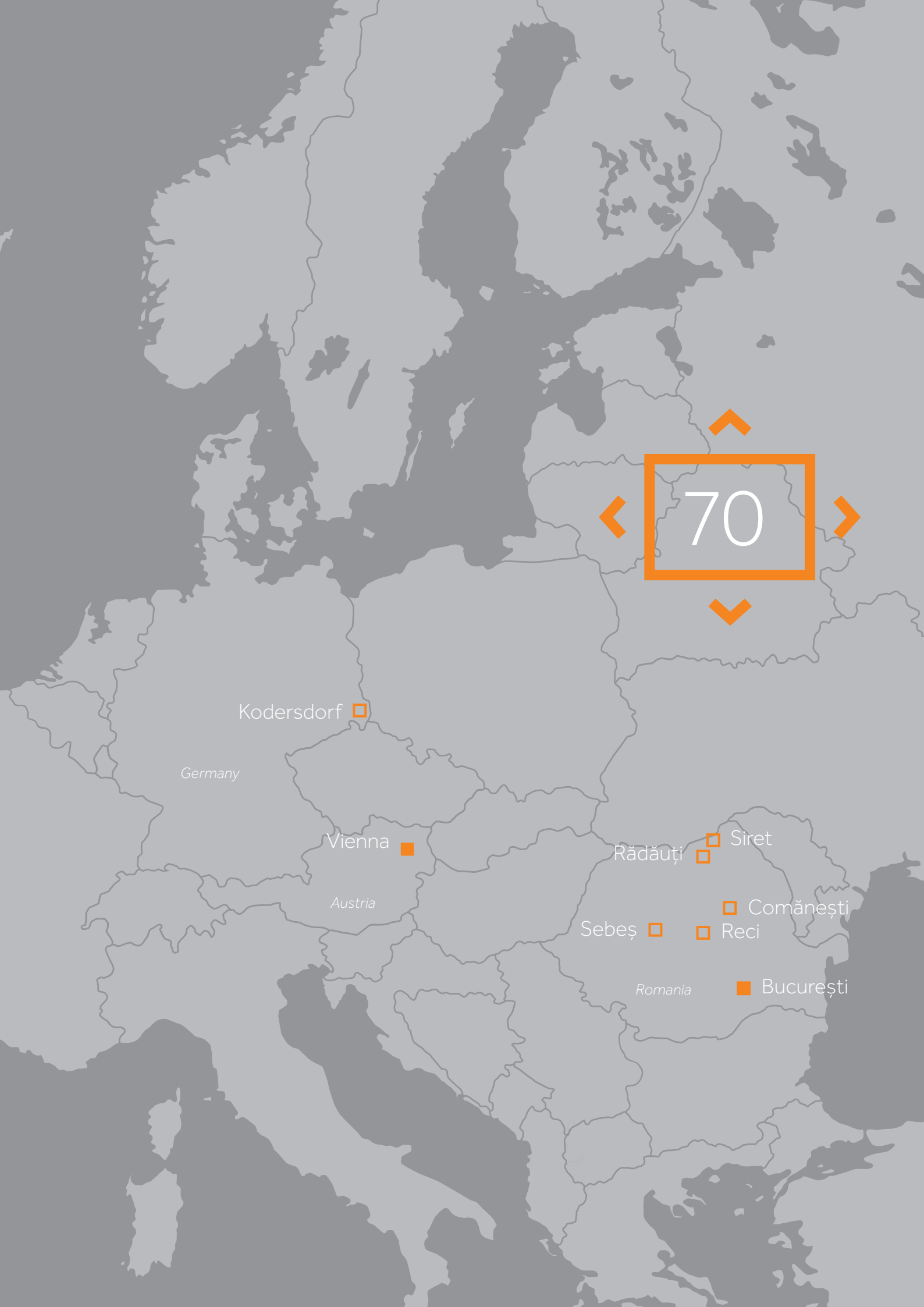
Our internal organisation is well structured and understood by all our employees.

### **We work closely with our partners.**

Our suppliers as well as our customers are our economic basis. We offer them reliability and long-term partnerships.

### **Sustainability leads us in our daily business.**

We are committed to sustainability and growth throughout our organisation.



70

Kodersdorf

Germany

Vienna

Austria

Rădăuți

Siret

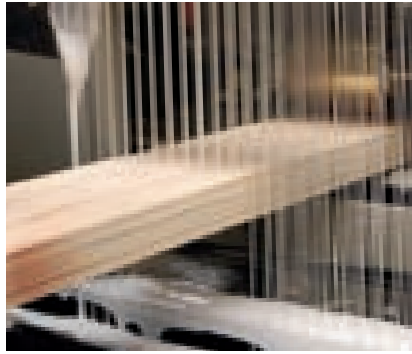
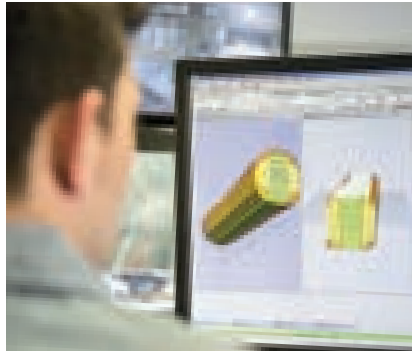
Sebeș

Reci

Comănești

Romania

București



## Our products

We develop individualised solutions for our customers. This requires an innovative mind-set, passion, precision and quick implementation. We therefore process only the best materials, in an environmentally friendly and sustainable manner. That is why we purchase our wood only from controlled sources.

In addition to high-quality sawn coniferous timber, we also manufacture products with high value added at our processing facilities: our glue laminated construction timber is largely exported to Japan for use in residential buildings. Our blockboards are used, for example, as a flexible and extremely stable material in high-quality furniture construction. We produce shuttering panels for precast concrete construction. DIY enthusiasts will find our tongue and groove boards and edge-glued boards in home improvement stores. Pellets and briquettes, made from our sawdust and shavings are a high-quality, eco-friendly source of energy.

### **Production sites**

The HS Timber Group, with its head office in Vienna, is a strong company with six production sites in Romania and Germany. We have had strong roots in Romania in particular for many years. In 2003, we opened our first sawmill in Sebeş, Romania, where the company now operates three sawmills, a blockboard factory and a panels factory. We employ around 3,200 people, of which 2,700 employees are based in Romania. On top of that, some 10,000 jobs have been created in related industries. In October 2015, a sawmill in Kodersdorf, Germany, was added to the group. Our products are sold in around 70 countries across the world.







## Our employees are among the best in the industry

### **Attractive Jobs**

We offer secure and attractive jobs with one of Europe's leading wood-processing companies. The HS Timber Group operates in many Central and Eastern European countries and offers a wide range of interesting job opportunities.

Effective teamwork is the cornerstone for our success: We are united and take a direct and hands-on approach. As a team, we are passionate about new challenges, always striving to find the best solutions from wood. To achieve this, we require employees who can perform well and are fully committed to the cause.

### **Working together for the best solutions**

We support the professional development of our employees and believe in their skills and commitment. Our motto is "Perfection in Timber" – this requires continual development, both in terms of technology as well as personal skills and expertise. We encourage our employees to think out of the box in order to find the best approach and offer the best solutions to our customers.



Mixed forest, Rădăuți



## Responsibility for people and the environment

We demonstrate our commitment to sustainability and community development in our daily work: including transparent and responsible sourcing, green energy production to power our mills and support for our surrounding environment and communities. We are committed to sustainable growth in our entire organisation and only purchase wood for processing from strictly controlled sources.

### **Our resources are sustainable and unique**

Our company's century-old tradition in wood processing has forged a deep connection to wood as a raw material. Only a forest that is managed sustainably can meet industry demand. Preserving and fostering this natural resource is therefore one of our uppermost concerns. We take a clear stand in the fight against illegal logging. Therefore, we have implemented a comprehensive action plan with measures that surpass all legal requirements. We insist on careful use of environmental resources and effective environmental management as an integral part of our economic activity. This fosters innovation and success while ensuring the protection of forests.

### **Our supply chain is transparent**

We are the first European company to have implemented the GPS tracking system Timflow in Romania to ensure that every timber delivery arriving at our mills comes from legal sources. Following our principle of transparency, we publish the GPS data of all transport routes online ([www.timflow.com](http://www.timflow.com)).

### **Too precious to waste**

Our processing technology and standards guarantee that the entire log is utilized with no raw material going to waste. By-products such as wood chips and wood shavings are processed into pellets and briquettes for green energy production or are processed further into pulp, paper or particle boards.

### **We are a net supplier of sustainable energy**

We generate more energy in power plants from bark and biomass than required for operating our plants. Thanks to this positive energy balance, we are a net supplier of renewable energy. Thus, in addition to supplying our own plants with energy, we are also able to provide enough green energy to supply a small town.

The foundations of our  
company: modern technology  
and outstanding infrastructure.



Sebeş, Romania

Sawmill, production start: 2003  
Processing capacity: 1.45m m<sup>3</sup>/year





## Reci, Romania

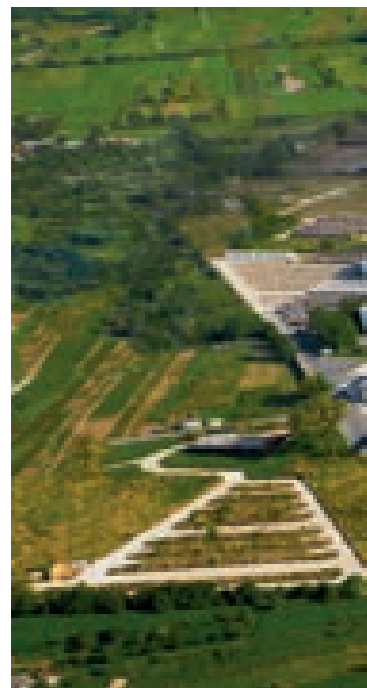
Sawmill, production start: 2015

Processing capacity: 800,000 m<sup>3</sup>/year

## Comănești, Romania

Acquired: 2010

Blockboard and shuttering  
panel capacity: 145,000 m<sup>3</sup>/year





Rădăuți, Romania

Sawmill, production start: 2008  
Processing capacity: 1.45m m<sup>3</sup>/year







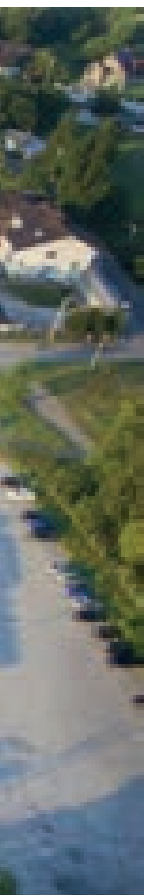
## Kodersdorf, Germany

Sawmill, acquired: 2015  
Processing capacity: 1.2m m<sup>3</sup>/year



## Siret, Romania

Acquired: 2009  
Edge-glued and finger jointed timber  
capacity: 130,000 m<sup>3</sup> lumber input/year





**We want to  
get better  
every day.**

Nicolae Augustin  
Barbălată  
Quality Control,  
Comănești



### **Austria**

HS Timber Group GmbH  
Favoritenstraße 7/2  
1040 Vienna  
Tel +43 (0) 1 585 68 62-0  
office@hs.at

### **Romania**

*București*  
HS Timber Productions S.R.L.  
Strada Grigore Alexandrescu Nr. 59, et. 2  
Sector 1, 010623 Bucharest  
Tel +40 (0) 372 422 700  
office@hs.ro

### *Sebeș*

HS Timber Productions S.R.L.  
Strada Industriilor Nr. 1  
515800 Sebeș  
Tel +40 (0) 258 806 300  
sebes@hs.ro

### *Rădăuți*

HS Timber Productions S.R.L.  
Strada Austriei Nr. 1  
725400 Rădăuți  
Tel +40 (0) 230 207 400  
radauti@hs.ro

### *Reci*

HS Timber Productions S.R.L.  
Nr. 673  
527145 Reci  
Tel +40 (0) 367 800 188  
reci@hs.ro

### *Siret*

HS Timber Productions S.R.L.  
Strada 1. Decembrie Nr. 1  
725500 Siret  
Tel +40 (0) 230 207 470  
siret@hs.ro

### *Comănești*

HS Baco Panels S.R.L.  
Strada Crinului Nr. 15  
605200 Comănești  
Tel +40 (0) 234 374 052  
baco@hs.ro

### **Germany**

HS Timber Productions GmbH  
Industriestraße 1  
02923 Kodersdorf  
Tel +49 (0) 358 256 18-0  
kodersdorf@hs.at

[www.hs.at](http://www.hs.at)

[www.hs.ro](http://www.hs.ro)



produced according to the  
Austrian Eco-Label criteria  
UZ 24 "low pollutant printed products"  
Druckerei Janetschek GmbH · UWNr. 637



PEFC™  
PEFC/06-39-03

PEFC certified

This product  
is from sustainably  
managed forest  
and controlled  
sources.

[www.pefc.org](http://www.pefc.org)



**HS TIMBER  
GROUP**